

ENA  cem^z

SELF CURING
CEMENT FOR
ZIRCONIA

ADHESION: **3** safe choices



Micerium S.p.A.
Via G. Marconi, 83-16036 Avegno (GE) Italy
Tel. (+39) 0185 7887 880 • Fax (+39) 0185 7887 970
info@micerium.it • www.micerium.com

File: EnaBond ENG v1_1_04-2013

ENA  bond[®]

ONE-BOTTLE

COSM300

ENA BOND ONE-COMPONENT ADHESIVE	
Ena Bond light curing Bonding	5 ml
Ena Etch Phosphoric acid 37%	2 ml
Accessories	

Refill

COSM300A	Ena Bond light curing Bonding	5 ml
COSM300D	Ena Bond catalyst	5 ml
COSM101B	Ena Etch Phosphoric acid 37%	29 ml

TWO-BOTTLE

COSM300K

ENA BOND TWO-COMPONENT ADHESIVE	
Ena Bond light curing Bonding Primer	5 ml
Ena Seal light curing resin	5 ml
Ena Etch Phosphoric acid 37%	2 ml
Accessories	

Refill

COSM300A	Ena Bond light curing Bonding	5 ml
COSZ10	Ena Seal light curing resin	5 ml

SELF-ETCHING

CFOTK

ENA BOND SE SELF-ETCHING ADHESIVE	
Ena Bond SE Primer	5 ml
Ena Bond SE light curing resin	5 ml
Ena Etch Phosphoric acid 37%	2 ml
Accessories	

CFOT

ENA BOND SE SELF-ETCHING ADHESIVE	
Ena Bond SE Primer	5 ml
Ena Bond SE light curing resin	5 ml

Refill

CFOTP	Ena Bond SE Primer	5 ml
CFOTS	Ena Bond SE light curing resin	5 ml

ENA BOND



ADHESION: 3 safe choices

ETCH & RINSE

ONE-BOTTLE

- Aesthetics & Retention
 - Fluorescent as natural tooth
 - Ethanol based special composition
 - Dual catalyst used with dual composite
 - **Bond strength values over the average industry: 30 Mpa***
- * Test made by University of Chieti - Prof. Camillo D'Arcangelo



ETCH & RINSE

TWO-BOTTLE

IV generation two-bottle adhesive
 You can get great adhesion results and a perfect seal by using Ena Bond as a primer and Ena Seal as second layer of unfilled adhesive resin; Ena Bond becomes a two-bottle adhesive system

- **Excellent adhesion values on dentine: 24 Mpa***
- * Test made by University of Chieti - Prof. Camillo D'Arcangelo



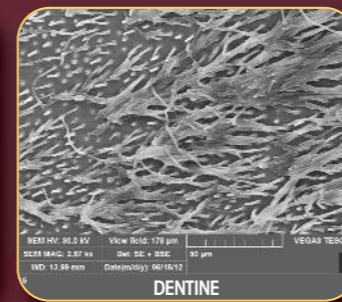
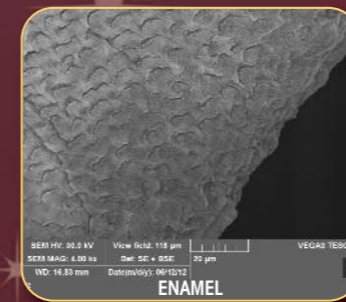
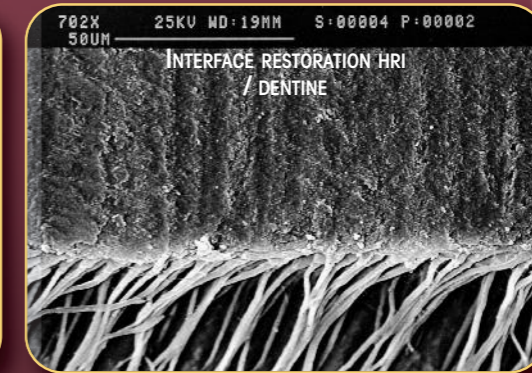
ENA  bond®

3 SELF ETCHING

- Bond strength values* over the average industry:
 - 24 Mpa on dentine
 - 17 Mpa on no-etched enamel
 - 20 Mpa on etched enamel
- Special composition in water solution

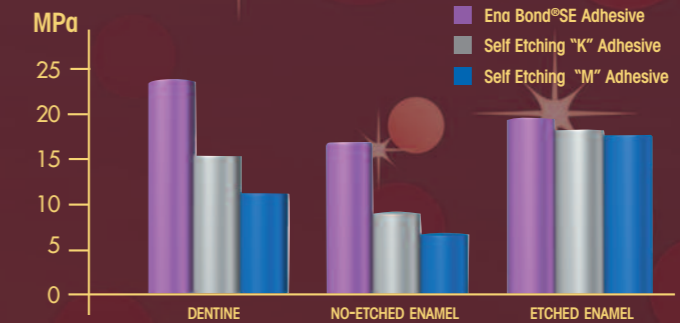


Etched enamel and dentine treated with Ena Bond SE (images at electron microscope SEM)
 Microscopies performed at University of Tor Vergata in Rome by Prof. Francesco Mangani, who contributed to the creation of Ena Bond SE after 3 years of research and tests.



Enamel and dentine treated with Ena Bond SE (images at electron microscope SEM)
 The microscopy shows the enamel surface and the "resin-tags" that put in evidence the penetration of Ena Bond SE in dentine tubules (Prof. Vassilios Kaitsas).

Micro Tensile Bond Strength

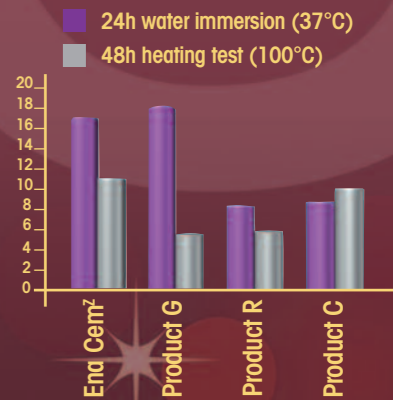


* Test made by University of Chieti - Prof. Camillo D'Arcangelo, in comparison with two other self-etching adhesive systems with Primer

ENA  cem^z

SELF CURING CEMENT FOR ZIRCONIA

Special cement for luting of zirconia prosthodontic appliances both on natural teeth and on implants



CPCZK Ena Cem^z for zirconia Introductory Kit:
 Self curing cement 8 g
 Primer 5 ml

CPCZ Ena Cem^z for zirconia Self curing cement 8 g

CPCZP Ena Cem^z for zirconia Primer 5 ml